



HIGH PERFORMANCE FIRE RESISTANT

PROTECTIVE APPAREL

Knit Button-Up Shirts

Featuring a 16 Cal Button-Up

Page 10

Waffle Cut FR

Pull-Over Design with
Built-in Balaclava

Page 19

High Performance FR Sweater Knit

Soft, Comfortable, & Stylish

Page 20

High Performance FR Hoodies

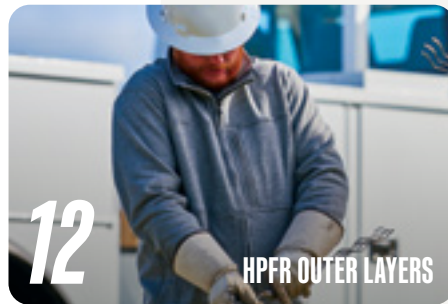
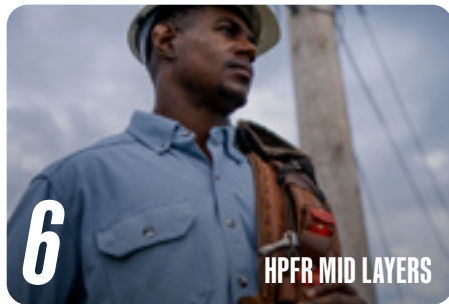
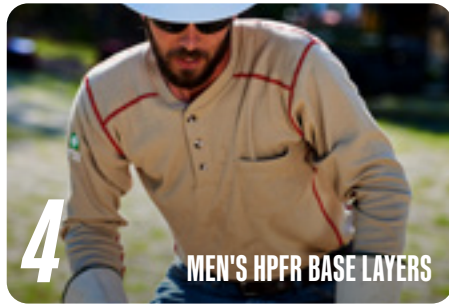
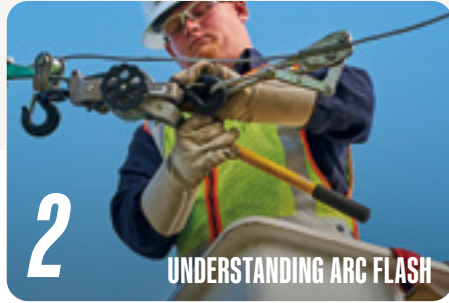
Dual Hazard, Water &
Wind Resistant

Page 22





TABLE OF CONTENTS



ARC FLASH PROTECTION

UNDERSTANDING LAKELAND'S FR/AR LAYERING SYSTEM

BASE

MID



BASE

MID

OUTER



FUZE™ TECHNOLOGY

SAFE FOR PEOPLE AND THE PLANET

FUZE™ is a safe and sustainable textile enhancing technology that targets odor-causing bacteria and fungus on contact.



ODOR CONTROL

- Eliminates harmful pathogens
- Mitigates growth of mold and fungus



HYPER-EVAPORATION & COOLING

- Reduces drying times
 - Enhances wicking & cooling properties
- * Wind tunnel testing shows fabrics treated with FUZE dry 10-25% faster than untreated fabrics



UVA/UVB PROTECTION

- Prevents damage from ultraviolet light
- Refracts harmful UV wavelengths



SAFE & SUSTAINABLE

- Prevents damage from ultraviolet light
- Refracts harmful UV wavelengths

When multiple garments need to be worn at once, their specific combination must be tested to determine the overall effective arc rating of the ensemble.



MOISTURE WICKING TECHNOLOGY

THE KEY TO COOL SUMMERS AND WARM WINTERS

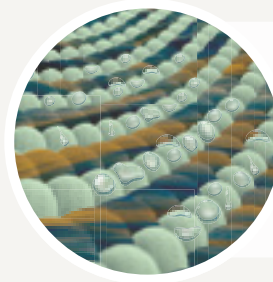
All Lakeland HPFR fabrics incorporate key principles of moisture wicking technology to pull moisture from your body to the surface of the garment, where it can spread and dry more quickly than classic or traditional FR workwear.

Absorb moisture and sweat with hydrophilic fibers

Push moisture and sweat away from the body with hydrophobic fibers

Push moisture and sweat through the garment to the outside

Spread moisture on the outside of the garment quickly



All Lakeland HPFR garments feature an optimal 60/40 blend of hydrophobic and hydrophilic fibers spun together with precision to ensure permanent moisture-wicking technology in every garment layer.

STAY DRY.

Lakeland FR apparel absorbs more moisture to the exterior of the garment than competing fabrics, creating a drier zone next to your skin.

STAY WARM.

From base layer to outer layer, stay comfortable and warm with a layering system designed to pass moisture through each layer quickly.

STAY MOBILE.

Lightweight, maneuverable fabrics that add the protection you need without the bulk and weight that contributes to increased muscle fatigue.

FR LAYERING

FOR WARM, DRY WINTERS

Every layer of apparel you wear on the job matters. As you add and remove layers in cold weather climates, you rely on your FR garments to offer you protection, comfort, and dryness.

The **base layer** must offer permanent moisture-wicking capabilities to keep you feeling dry by pulling sweat off of your skin quickly

Every additional layer, whether **mid** or **outer**, must have permanent moisture-wicking to pull moisture through the fabric and dissipate the moisture to the outer surface

Keeping the elements at bay while moving moisture away from your body is the key to the overall performance of an effective layering system

Lakeland's FR/AR layering system offers some of the highest protection available in the industry.

With the added benefits of inherent FR properties, lightweight fabric, and permanent moisture wicking technology, Lakeland HPFR garments provide **superior performance, protection, and comfort.**

MEN'S HPFR KNITS

LIGHTWEIGHT | INHERENTLY FR | PERMANENT MOISTURE WICKING

Advanced high performance fire resistant (HPFR) design meets breathable comfort in this lightweight **BASE** layer.

How quickly you feel dry and comfortable matters all year long. Lakeland's inherently FR lightweight fabric with permanent moisture-wicking technology helps you stay dry, comfortable, and protected in every season.



Product Features

Unparalleled CAT 2 protection at 16.4 cal/cm²

Quickly moves moisture away from the body

Flat seam construction for greater comfort and no chafing

Rolled side seam to front and back for superior comfort

Drop shoulder design & left chest pocket

No seam on top of shoulder or under arm

NFPA 70E & NFPA 2112 – UL Certified

UPF rated 50+ sun protection



SSCAT29RT, SSCAT CAT 2
HI-VIS SHORT SLEEVE CREW, HI-VIS YELLOW
SHORT SLEEVE CREW, GRAY & KHAKI

SPECIFICATIONS:

Fabric: 6.95 oz Inherently FR Lightweight Fabric

Standards: NFPA 70E, NFPA 2112 - UL Certified

ATPV: 16.4 cal/cm² **CAT:** 2

Sizes: S-6XL (Talls Available MD-4X)

COLORS:

- Heather Gray
- Khaki
- Hi-Vis Yellow



Hi-Vis Garment Features

3M™ Scotchlite™ segmented reflective trim

Room above pocket for corporate logo imprint

Meets ANSI 107 Class 3 for visibility

with **3M** | **Scotchlite™**
Reflective Material



LSCAT29RT, LSCAT CAT 2
MEN'S LONG SLEEVE CREW
HI-VIS YELLOW, GRAY, KHAKI

HSAT29RT, HSAT CAT 2
3-BUTTON LONG SLEEVE HENLEY
HI-VIS YELLOW, GRAY, KHAKI



16.4 cal
CAT 2

LSCWAT06, LSCWAT20 CAT 2
WOMEN'S LONG SLEEVE CREW



16.4 cal

HSWAT06 CAT 2
WOMEN'S 3-BUTTON LONG
SLEEVE HENLEY



16.4 cal

HSAT20 CAT 2
WOMEN'S 3-BUTTON LONG
SLEEVE HENLEY

WOMEN'S HPFR KNITS

LIGHTWEIGHT | INHERENTLY FR | PERMANENT MOISTURE WICKING

Equipped with the same FR/AR protection as the men's styles, these HPFR knit shirts are constructed with classically tailored details for a more accurate women's fit.

Product Features



Unparalleled CAT 2 protection at 16.4 cal/cm²

Quickly moves moisture away from the body

Flat seam construction for comfort, no chafing

Rolled side seam to front and back

Drop shoulder design & left chest pocket

No seam on top of shoulder or under arm

NFPA 70E & NFPA 2112 – UL Certified

UPF rated 50+ sun protection

SPECIFICATIONS:


Fabric: 6.95 oz Inherently FR Lightweight Fabric

Standards: NFPA 70E, NFPA 2112 - UL Certified

ATPV: 16.4 cal/cm² **CAT:** 2

Sizes: S-6XL (Talls Available MD-4X)

COLORS:

-  Heather Gray
-  Khaki



The foundational key to the Lakeland FR/AR layering system.

To be able to focus on your safety and the job at hand, your FR workwear can't be covered in sweat. Lakeland HPFR base layer shirts have the optimal 60/40 blend of hydrophobic and hydrophilic fibers to consistently pull moisture away from the body, move it to the outer surface of the garment, and allow your workwear to dry. Staying dry is key to keeping you comfortable and better protected on the job.

BASE LAYER

HPFR KNIT BUTTON-UPS

LIGHTWEIGHT | INHERENTLY FR | PERMANENT MOISTURE WICKING

Lakeland's High Performance FR Knit Button-Up offers permanent moisture wicking technology that is designed for protection and comfort.

The stylish design, optimal blend, and CAT 2 protection makes this shirt an excellent choice for a mid layer option. Also available in Hi-Vis, the ISHAT29RT meets ANSI 107 Class 3.



16.4 cal
CAT 2

ISHAT06 CAT 2
HPFR KNIT BUTTON-UP, GRAY

Product Features

Unparalleled CAT 2 protection at 16.4 cal/cm²

Hi-Vis features 3M™ Scotchlite™ Reflective Material trim

Quickly moves moisture away from the body, front to back

Button-down, tag-free collar for greater comfort

Two chest pockets for expanded storage

Sleek athletic cut

NFPA 70E & NFPA 2112 – UL Certified

UPF rated 50+ sun protection



16.4 cal

ISHAT20 CAT 2
HPFR KNIT BUTTON-UP,
KHAKI



16.4 cal

ISHAT29RT CAT 2
HPFR KNIT BUTTON-UP,
HI-VIS YELLOW

SPECIFICATIONS:

Fabric: 6.95 oz Inherently FR Lightweight Fabric

Standards: NFPA 70E, NFPA 2112 - UL Certified

ATPV: 16.4 cal/cm² **CAT:** 2

Sizes: S-6XL (Talls Available MD-4X)

COLORS:

- Heather Gray
- Khaki
- Hi-Vis Yellow



MID LAYER

Versatile garments that can help take the chill off or provide an extra layer of insulation for those long, frigid winter days.

Paired with a base layer, mid layers continue to pull moisture away from your body and move it to the outermost garment so it can dry. Lightweight, effective fabrics let mid layers increase comfort without reducing mobility.



16.4 cal
CAT 2

ISHATP09 CAT 2
DIAMOND PRINT DRESS SHIRT
LIGHT BLUE



16.4 cal

ISHATP12 CAT 2
DIAMOND PRINT DRESS SHIRT
DARK BLUE

DIAMOND PRINT DRESS SHIRT

LIGHTWEIGHT | INHERENTLY FR | PERMANENT MOISTURE WICKING

Excellent breathability meets high performance fire resistant (HPFR) protection in this stylish button-down dress shirt.

How quickly you feel dry and comfortable matters all year long. Lakeland's inherently FR lightweight knit fabric with permanent moisture-wicking technology helps you stay dry, comfortable, and protected in every season.



Product Features

- Tag-free collar
- Drop shoulder design
- Left pocket with pen slot
- Rounded tail
- 6.9 oz MID layer fabric
- NFPA 70E, CAT2

SPECIFICATIONS:

Fabric: 6.95 oz Inherently FR Knit Fabric
Standards: NFPA 70E
ATPV: 16 cal/cm² **CAT:** 2
Sizes: S-5XL



COLORS:

- Light Blue
- Dark Blue

with **FUZE™** TEXTILE ENHANCING TECHNOLOGY



ODOR CONTROL



SAFE & SUSTAINABLE



DYNAMIC COOLING



UVA/UVB REFRACTION



PERMANENT TREATMENT

6.5 oz. WESTEX® DH BUTTON-UPS

LIGHTWEIGHT | INHERENTLY FR | PERMANENT MOISTURE WICKING



8.9 cal
CAT 2

ISH65DH CAT 2

6.5 oz. WESTEX® DH BUTTON-UP SHIRT, KHAKI

Lakeland's Westex® DH Button-Up shirt provides comfort and FR properties that cannot be washed out or worn away.

This dual hazard protection shirt is designed for utility, with the drop shoulder design, and the rounded tail for a neater appearance. Also available in Hi-Vis, the ISH65DH meets ANSI 107 Class 3.

Product Features

Quickly moves moisture away from the body, front to back

Hi-Vis features 3M™ Scotchlite™ Reflective Material trim

FR protection that cannot be washed out or worn away

Highly breathable, comfortable, and lightweight fabric

Dual hazard protection for arc flash and flash fire

NFPA 70E & NFPA 2112 – UL Certified

Hi-Vis Style meets ANSI 107 Class 3



8.9 cal

GRAY



8.9 cal

HI-VIS YELLOW

SPECIFICATIONS:

Fabric: 6.5 oz Inherently FR Lightweight Fabric

Standards: NFPA 70E, NFPA 2112 - UL Certified

ATPV: 8.9 cal/cm² **CAT:** 2

Sizes: S-6XL (Talls Available MD-4X)



COLORS:

- Navy Blue
- Royal Blue
- Medium Blue
- Gray
- Khaki
- Hi-Vis Yellow



8.9 cal

NAVY BLUE



8.9 cal

ROYAL BLUE



8.9 cal

MEDIUM BLUE



Westex[®]
DH

8.9
cal

ISHW65DH

8.9
cal

ISHW65DH29RT

WOMEN'S 6.5 OZ. WESTEX[®] DH BUTTON-UP SHIRTS

Lightweight | Inherently FR |
Permanent Moisture Wicking

For a classic, professional look, this women's button-up offers inherent FR protection with a tailored, functional design.

- Inherent moisture management
- 6.5 oz. lightweight inherently FR fabric
- Dual Hazard Protection for Arc Flash and Flash Fire
- NFPA 2112 - UL Certified
- NFPA 70E, CAT 2
- Excellent breathability
- FR protection cannot be washed out or worn away
- Soft and Comfortable
- Hi-Vis Style features reflective trim for low light visibility
- Hi-Vis Style meets ANSI 107 Class 3

Style Numbers:

ISHW65DH

Women's Khaki Button Down

ISHW65DH29RT – Women's Hi-Vis Yellow with Reflective Striping

Specifications:

Standard: NFPA 70E,
NFPA 2112 - UL Certified

ATPV: 8.9 cal/cm² **CAT:** 2

Sizes: XS - 3X, Talls Available MD - 3X

Colors: Available in Khaki and Hi-Vis Yellow





HPFR WAFFLE GARMENTS

LIGHTWEIGHT | INHERENTLY FR | PERMANENT MOISTURE WICKING

Waffle cut fabric meets high performance fire resistant (HPFR) design for the ultimate MID layer garment.

How quickly you feel dry and comfortable matters all year long. Lakeland's inherently FR lightweight waffle cut fabric with permanent moisture-wicking technology helps you stay dry, comfortable, and protected in every season.



9.7 cal
CAT 2

LSCMWH29RT, LSCMWH CAT 2

WAFFLE CUT HI-VIS HOODIE W/ NECK GAITER, HI-VIS YELLOW
WAFFLE CUT FR HOODIE W/ NECK GAITER, BLACK



9.7 cal

LSCMWZ CAT 2

WAFFLE CUT FR QUARTER ZIP
BLACK

Product Features

Unparalleled CAT 2 protection at 9.7 cal/cm²

Quarter zip and pullover hoodie design offerings

Soft hand with a bit of added stretch for comfort

Integrated neck gaiter for additional protection of neck, mouth, and nose

Lightweight waffle cut MID fabric

NFPA 70E & NFPA 2112 – UL Certified

Hi-Vis Style meets ANSI 107 Class 3



SPECIFICATIONS:

Fabric: 8.0 oz Waffle Cut Inherently FR Fabric

Standards: NFPA 70E, NFPA 2112 - UL Certified

ATPV: 9.7 cal/cm² **CAT:** 2

Sizes: XS-5XL (Talls Available MD-5X)

COLORS:

● Black

● Hi-Vis Yellow



with TEXTILE ENHANCING TECHNOLOGY



ODOR CONTROL



SAFE & SUSTAINABLE



DYNAMIC COOLING



UVA/UVB REFRACTION



PERMANENT TREATMENT

HPFR SWEATER KNIT

LIGHTWEIGHT | INHERENTLY FR | PERMANENT MOISTURE WICKING



14 cal
CAT 3

LSCSK06 CAT 3

HPFR SWEATER KNIT PULLOVER, HEATHER GRAY

Lakeland's High Performance FR Sweater Knit is constructed with incredible horizontal stretch and permanent FR and moisture wicking technology.

When the weather turns cold, this **MID** layer garment will keep you warm while giving you the mobility you need to get the job done.

Product Features



11.0 oz. inherently FR sweater knit fabric

Permanent moisture wicking technology

Quarter zip closure

Black accented design

NFPA 70E & NFPA 2112 – UL Certified

SPECIFICATIONS:

- Fabric:** 11 oz Inherently FR Lightweight Fabric
- Standards:** NFPA 70E, NFPA 2112 - UL Certified
- ATPV:** 14 cal/cm² **CAT:** 2
- Sizes:** S-6XL (Talls Available MD-4X)

COLOR:

- Heather Gray



Lakeland HPFR apparel takes moisture wicking to the next level, working to ensure you feel dry and comfortable all year long.



AIR PERMEABILITY

Breathability of the fabric, or air permeability, is important to keep you cool on the job.



VERTICAL MOISTURE WICKING

Vertical moisture wicking measures how well a garment pulls moisture off of your skin into the fabric.



TRANSPORT OF MOISTURE

Transport of moisture refers to a garment's ability to move moisture through the fabric to the outside surface.



SPREAD OF MOISTURE

Spread of moisture measures how quickly moisture spreads on the surface. The faster it spreads dictates how quickly you will feel dry.



WATER VAPOR TRANSMISSION RATE

Water vapor transmission rate measures how quickly moisture dissipates through a garment.

HPFR HOODIE JACKETS

LIGHTWEIGHT | INHERENTLY FR | PERMANENT MOISTURE WICKING

Lakeland's High Performance FR hoodies are equipped with features designed to keep you warm.

Available in pullover and zipper front hoodies, these garments are wind and water resistant, and have front hand warmer pockets. The permanent moisture wicking and FR properties are designed to keep the wearer dry and protected.



IHDP12ANT CAT 3
HPFR PULLOVER HOODIE, BLACK



IHD12ANT CAT 3
HPFR ZIPPER FRONT HOODIE
BLACK



IHPANT29RT CAT 3
HI-VIS PULLOVER HOODIE
HI-VIS YELLOW

Product Features

Permanent moisture wicking technology

12.3 oz. water and wind resistant fabric

Inherently FR Fabric

Front hand warmer pockets

Sleeves feature rib-knit cuffs

Hi-Vis features 3M™ Scotchlite™ Reflective Material trim

NFPA 70E & NFPA 2112 – UL Certified



SPECIFICATIONS:

Fabric: 12.3 oz Inherently FR Fabric

Standards: NFPA 70E, NFPA 2112 - UL Certified

ATPV: 28 cal/cm² **CAT:** 3

Pullover Sizes: XS-5XL (Talls Available MD-4X)

Zip Front Sizes: SM-5XL (Talls Available MD-5X)

COLORS:

- Black
- Hi-Vis Yellow



OUTER LAYER

Outer layers complete the Lakeland HPFR layering system for the ultimate comfort and protection in frigid conditions.

Moisture wicking fabrics continue pulling moisture away from your body to the outermost layer so that it can dry, while the wind resistant / water resistant fabrics help keep the elements at bay so you can focus on the task at hand.



28 cal
CAT 2

IJKT12ANT06 CAT 3
HPFR ZIP-FRONT JACKET, HEATHER GRAY



28 cal

IJK12ANT29RT CAT 3
HPFR HI-VIS ZIP-FRONT JACKET
HI-VIS YELLOW

HPFR ZIP JACKETS

LIGHTWEIGHT | INHERENTLY FR | PERMANENT MOISTURE WICKING

Lakeland's HPFR jackets are an optimal **OUTER** layer option.

Available in grey and hi-vis yellow, these jackets feature a smooth finish that is abrasion resistant and prevents snagging. Coupled with its hand warmer pockets, this wind and water resistant jacket is perfect for cold weather applications.

Product Features

Extremely abrasion resistant finish prevent snagging

Permanent moisture wicking technology

12.3 oz. water and wind resistant fabric

Zipper pockets and full length zipper closure

Front hand warmer pockets

Hi-Vis features 3M™ Scotchlite™ Reflective Material trim

NFPA 70E & NFPA 2112 – UL Certified



SPECIFICATIONS:

Fabric: 12.3 oz Inherently FR Fabric

Standards: NFPA 70E, NFPA 2112 - UL Certified

ATPV: 28 cal/cm² **CAT:** 3

Sizes: XS-5XL (Talls Available MD-4X)

COLORS:

- Heather Gray
- Hi-Vis Yellow



FR LIGHTWEIGHT PANT

LIGHTWEIGHT | STRETCH | RIPSTOP

Increased mobility and comfort meets high performance fire resistant (HPFR) protection in this lightweight pant design.

Constructed with a flexible lightweight fabric and built-in stretch, these pants will keep you protected and comfortable all day long.



IP95FMV13 - Men's
IP95WFMV13 - Women's
 LIGHTWEIGHT PANT, NAVY **CAT 2**

Product Features

9.5 oz Renegade Rip Flex fabric w/ FR Finish

Wider waistband and crotch gusset

Extra material heel to prevent wear

Front pocket with slash opening

Rip-stop stretch fabric


Articulated knees

Right-side tool pockets

NFPA 2112 – UL Certified

NFPA 70E, CAT2

COLORS:

 Navy



ARTICULATED KNEES FOR
INCREASED MOBILITY

SPECIFICATIONS:

Fabric: 9.5 oz Renegade Rip Flex with FR Finish

ATPV: 11 cal/cm² **CAT:** 2

Standards: NFPA 70E, NFPA 2112 - UL Certified

Sizes: 28-35, 36-50 (even)

STANDARDS:



NFPA
2112

NFPA
70E

CAT
2

 **MOUNT VERNON FR**

FLEXTEX

FR FABRIC DESIGNED
TO MOVE WITH YOU

DEVELOPED FOR GREATER COMFORT AND MOBILITY, FLEXTEX FABRICS INCLUDE AN ELASTOMERIC FIBER THAT ALLOWS THE FR FABRIC TO FLEX BETWEEN 12% AND 20%.

HPFR GARMENT SIZING

LIGHTWEIGHT | INHERENTLY FR | PERMANENT MOISTURE WICKING

HIGH PERFORMANCE SERIES GARMENTS

High Performance FR Series Knits and Shirts									
	S	M	L	XL	2X	3X	4X	5X	6X
Chest	36-38	40-42	44-46	48-50	52-54	56-58	60-62	64-66	68-70
Sleeve	35	36	36.5	37	38	39	40	41	42

Tall sizes MT-4XT add 2" to the standard sleeve length, 2" to the body.

High Performance FR Series Hoodies and Jackets									
	XS	S	M	L	XL	2XL	3XL	4XL	5XL
Chest	32-34	36-38	40-42	44-46	48-50	52-54	56-58	60-62	64-66
Sleeve	33	34	35	36.5	38	39	40	41.5	43

WOMEN'S FR GARMENT SIZING

High Performance FR Series Knits and DH Shirts									
	X/S	S	M	L	XL	2X	3X	4X	
Fits	1/2	4/6	8/10	12/14	16/18	20/22	24/26	28/30	

Tall sizes M-3X

Women's FR Pants													
Even Sizes	0	2	4	6	8	10	12	14	16	18	20	22	24

Inseams available in even sizes from 28-34

